

Royal Lancaster Infirmary Emergency Department

Monthly Bulletin: October 2009 to September 2010

This bulletin provides a breakdown of all injury attendances at Royal Lancaster Infirmary Emergency Department (ED) between October 2009 and September 2010.

Between October 2009 and September 2010 there were 17,301 injury attendances to Royal Lancaster Infirmary ED. The month with the highest attendance was May with 1,713 attendances (**Figure 1**). There were more male than female attendances presenting at Lancaster Royal Infirmary ED (males=9,620; 56%).

Figure 2 illustrates age group of ED attendances for each month. The majority of ED attendances were aged 30-59 (n=5,147; 30%) and 15-29 (n=5,134; 30%).

The referral source of injury attendances to the Royal Lancaster Infirmary ED are shown in **Table 1**. Most ED attendances self-referred (58%), 21% had their referral method recorded as other and 16% were referred by the emergency services.

Table 2 details the injury group of ED attendances. For the majority (80%) of attendances, injury group was recorded as other injury. Sports injury accounted for 10% of attendances, 7% were road traffic collisions (RTC) and 2% were assaults.

Table 3 shows the location of incident for injury attendances, over three in ten (31%) of incident locations were recorded as other. This was followed by incidents in the home (30%) and in a public place (26%).

Table 4 illustrates the discharge destination for patients attending Royal Lancaster Infirmary ED. Almost six in ten (59%) of attendances were discharged, 15% were referred to the fracture clinic and 10% were admitted to hospital, while almost one in ten (8%) were discharged in to the care of their GP.

Assault attendances

Between October 2009 and September 2010 there were 391 assault attendances to Royal Lancaster Infirmary ED. The month with the highest attendance was June with 49 attendances (**Figure 3**). There were more male than female assault attendances presenting at Lancaster Royal Infirmary ED (males=301; 77%).

Table 5 shows age group of assault attendances for each month. The majority of ED assault attendances were aged 15-29 (n=219; 56%) and 36% were 30-59 years old (n=140).

Table 6 illustrates the location of incident for assault attendances to Royal Lancaster Infirmary ED. The primary incident location for assault attendances was other (53%), followed by public place (29%).

Table 7 shows the discharge destination for assault attendees. More than half (54%) of assault attendances were discharged. Over a fifth (21%) required follow-up treatment, while over one in ten (12%) were admitted to hospital.

Figure 1: ED injury attendances by gender and month, October 2009 to September 2010

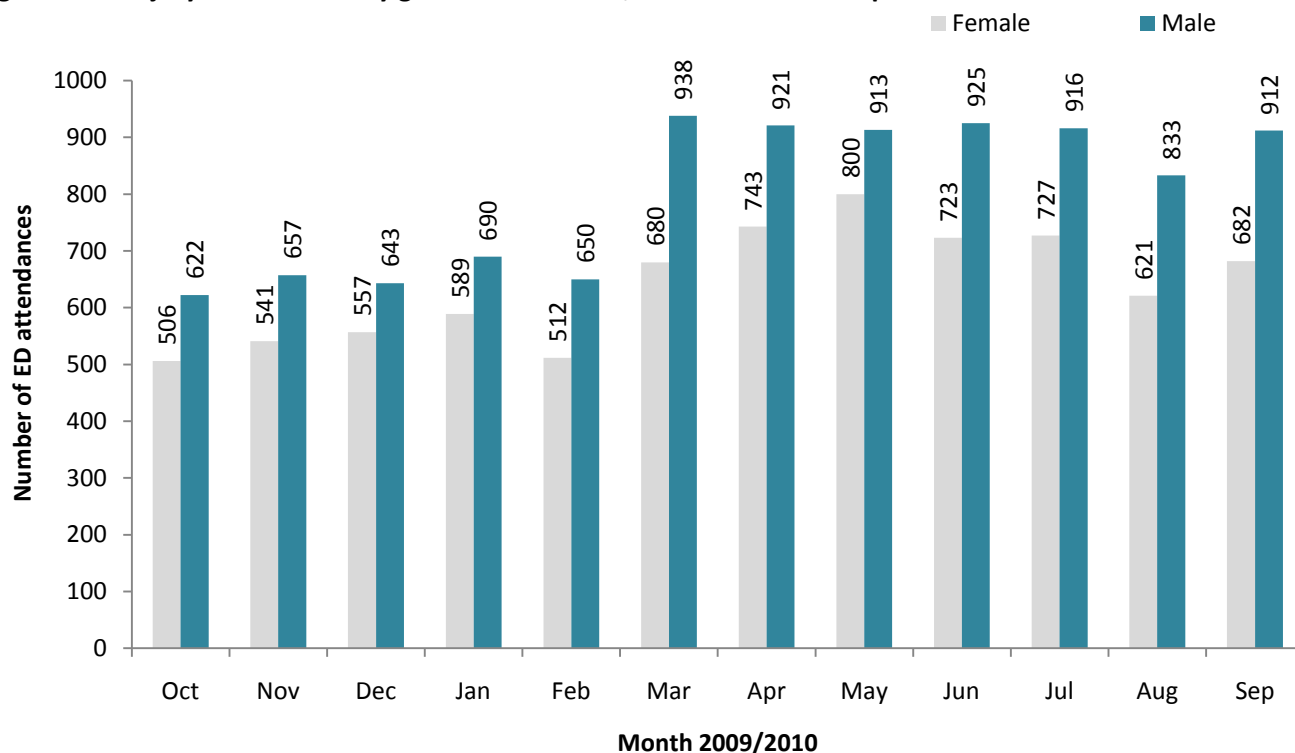


Figure 2: Age group of ED injury attendances by month, October 2009 to September 2010

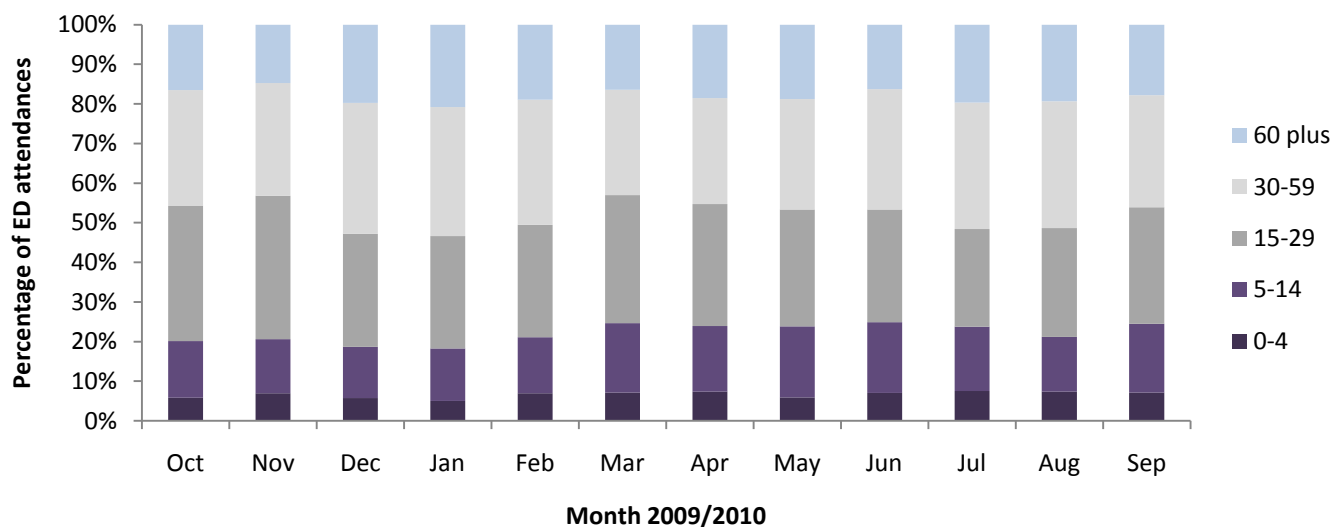


Table 1: ED injury attendances by source of referral and month, October 2009 to September 2010¹²³

Source of referral	Oct	Nov	Dec	Jan	Feb	Mar	Apr	May	Jun	Jul	Aug	Sep	Total	%
Self referral	628	712	746	809	653	905	980	1004	969	932	883	878	10099	58
Other	246	208	214	222	237	367	370	345	366	350	311	387	3623	21
Emergency services	189	196	205	196	210	262	253	280	235	302	220	259	2807	16
Work	26	31	17	12	23	21	22	25	18	13	24	20	252	1
Educational establishment	22	31	9	***	10	18	16	27	25	18	***	35	220	1
GP	11	13	***	23	22	34	13	23	22	22	***	11	206	1
Police	6	7	***	8	7	11	10	9	11	6	6	***	89	1
Health care provider: same or other	***	***	***	***	***	***	***	***	***	***	***	***	5	0
Unknown	***	***	***	***	***	***	***	***	***	***	***	***	***	0
Total	1128	1198	1200	1279	1162	1618	1664	1713	1648	1643	1454	1594	17301	100

¹Please note that all numbers less than five have been suppressed (with ***) in line with patient confidentiality and if there is only one number less than five in a category then two numbers will be suppressed to prevent back calculations from totals.

²Please note percentages might not add to one hundred due to rounding.

³GDP=general dental practitioner and GP=general practitioner.

Table 2: ED injury attendances by injury group and month, October 2009 to September 2010

Injury group	Oct	Nov	Dec	Jan	Feb	Mar	Apr	May	Jun	Jul	Aug	Sep	Total	%
Other injury	854	906	948	1081	913	1276	1363	1401	1322	1374	1175	1229	13842	80
Sports injury	153	148	86	67	145	200	147	164	137	109	113	194	1663	10
RTC	80	112	115	100	74	99	100	110	129	115	115	128	1277	7
Assault	25	***	42	22	23	33	34	***	49	34	39	32	391	2
Deliberate self-harm	16	***	9	9	7	10	20	***	11	11	12	11	128	1
Total	1128	1198	1200	1279	1162	1618	1664	1713	1648	1643	1454	1594	17301	100

Table 3: ED injury attendances by incident location and month, October 2009 to September 2010

Location	Oct	Nov	Dec	Jan	Feb	Mar	Apr	May	Jun	Jul	Aug	Sep	Total	%
Other	340	357	369	373	337	539	550	569	558	481	456	490	5419	31
Home	313	330	354	332	372	480	501	519	463	555	444	449	5112	30
Public place	274	283	323	441	285	358	443	409	427	430	464	419	4556	26
Workplace	95	111	77	72	82	101	102	102	105	113	83	117	1160	7
Educational establishment	106	113	77	61	86	140	68	112	95	63	6	119	1046	6
Unknown	***	***	***	***	***	***	***	***	***	***	***	***	8	0
Total	1128	1198	1200	1279	1162	1618	1664	1713	1648	1643	1454	1594	17301	100

Table 4: ED injury attendances by discharge destination and month, October 2009 to September 2010

Discharge destination	Oct	Nov	Dec	Jan	Feb	Mar	Apr	May	Jun	Jul	Aug	Sep	Total	%
Discharged - no follow-up	624	737	704	703	701	965	980	1019	979	917	872	964	10165	59
Fracture clinic	163	183	191	243	169	248	234	220	242	233	199	222	2547	15
Admitted	101	97	107	121	138	173	169	199	141	189	147	162	1744	10
Discharge - follow up care by GP	115	102	107	127	63	98	128	101	129	154	106	102	1332	8
Left - before being treated	67	27	29	27	28	54	65	78	80	63	68	62	648	4
Out-patient clinic	15	12	21	24	19	31	29	32	22	31	16	29	281	2
ED clinic	13	18	17	16	20	24	24	22	22	24	21	28	249	1
Other health care professional	17	13	19	15	16	15	17	27	20	18	17	14	208	1
Transferred to other health care provider	8	***	***	***	***	***	10	***	***	***	***	6	47	0
Left - refused treatment	***	***	***	***	***	***	5	6	***	5	***	***	35	0
Other	***	***	***	***	***	***	***	***	***	***	***	***	24	0
Unknown	***	***	***	***	***	***	***	***	6	***	***	***	15	0
Died in department	***	***	***	***	***	***	***	***	***	***	***	***	***	0
Restored to ward	***	***	***	***	***	***	***	***	***	***	***	***	***	0
Total	1128	1198	1200	1279	1162	1618	1664	1713	1648	1643	1454	1594	17301	100

Assaults

Table 5: ED assault attendances by age group and month, October 2009 to September 2010

Age group	Oct	Nov	Dec	Jan	Feb	Mar	Apr	May	Jun	Jul	Aug	Sep	Total	%
Unknown	***	***	***	***	***	***	***	***	***	***	***	***	***	0
0-4	***	***	***	***	***	***	***	***	***	***	***	***	***	0
5-14	***	***	***	***	***	***	***	***	6	***	***	5	24	6
15-29	12	14	27	10	13	18	22	21	26	14	26	16	219	56
30-59	12	9	14	9	9	14	8	13	15	17	9	11	140	36
60 plus	***	***	***	***	***	***	***	***	***	***	***	***	8	2
Total	25	24	42	22	23	33	34	34	49	34	39	32	391	100

Figure 3: Number of ED assault attendances by gender and month, October 2009 to September 2010

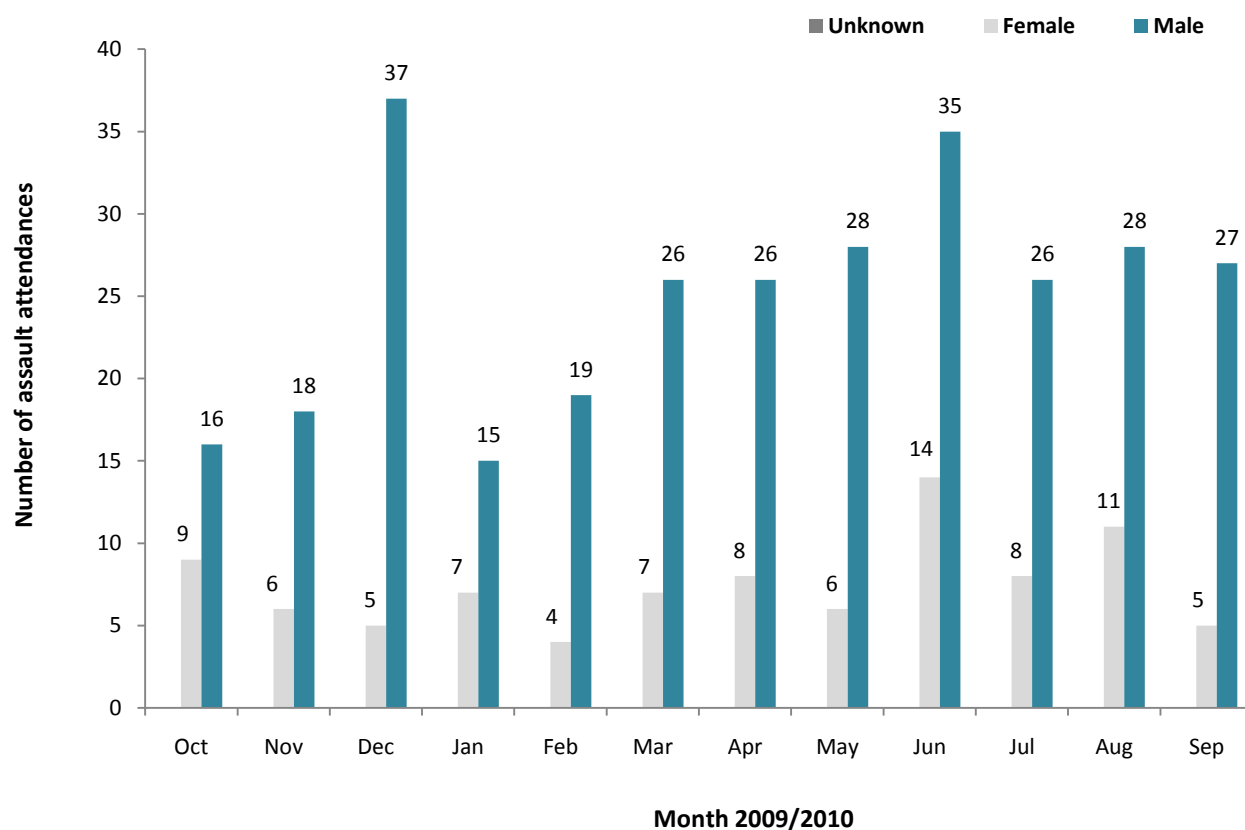


Table 6: ED assault attendances by incident location and month, October 2009 to September 2010

Location	Oct	Nov	Dec	Jan	Feb	Mar	Apr	May	Jun	Jul	Aug	Sep	Total	%
Other	17	11	25	13	12	21	21	13	29	14	11	19	206	53
Public place	***	8	9	7	***	7	9	13	12	10	21	11	113	29
Home	***	***	***	***	7	***	***	***	***	6	6	***	42	11
Workplace	***	***	***	***	***	***	***	***	***	***	***	***	23	6
Educational establishment	***	***	***	***	***	***	***	***	***	***	***	***	7	2
Total	25	24	42	22	23	33	34	34	49	34	39	32	391	100

Table 7: ED assault attendances by discharge destination and month, October 2009 to September 2010

Discharge destination	Oct	Nov	Dec	Jan	Feb	Mar	Apr	May	Jun	Jul	Aug	Sep	Total	%
Discharged	14	14	28	8	12	22	17	17	29	16	21	14	212	54
Follow-up	***	***	6	8	6	***	11	8	8	8	8	8	82	21
Other	7	***	***	***	***	***	***	***	7	***	5	***	52	13
Admitted	***	***	***	***	***	***	***	***	5	***	5	7	45	12
Total	25	24	42	22	23	33	34	34	49	34	39	32	391	100

Published November 2010

Johnathan Rooney (Lancashire TIIG Officer)

Centre for Public Health, Liverpool John Moores University, 3rd Floor, Henry Cotton Campus, Liverpool, L3 2ET

Tel: 0151 231 4513 Email: j.rooney@ljmu.ac.uk

Website: www.tiig.info (please note data requests should be made through the website)